

Linoleum

LINOLEUM FLOORING

Non-toxic, proven durability, easy to install



Linoleum flooring has been used for decades throughout the world in both commercial and residential applications. Now, this product is available in an easy-to-install click-lock format, which makes it easy for DIYers to install themselves. This format also renders the product re-usable, and re-configurable should the purposes or design of the space change.

Linoleum is natural anti-static, so pet hair and dust will not cling to it. Linoleum is great for areas which must withstand abrasion from sand and wheelchair traffic as well.

features & benefits

Easy, click-lock floating installation

No toxic emissions

Anti-static against pet hair and dust

Rich, saturated color palette available

May be used over radiant heat

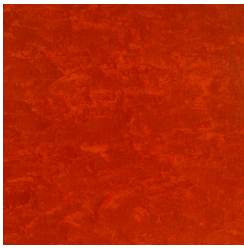
Layered with cork on the underside of the plank for added cushion and insulation



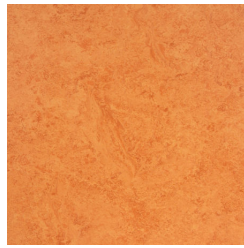
Tel 608.441.3265 | toll Free: 1.866.250.3273 | fax 608.441.3264

www.ecofriendlyflooring.com

Linoleum Flooring color palette



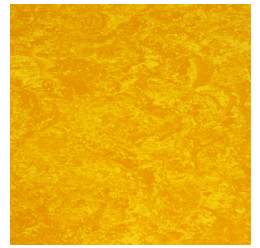
Brick



Tangerine



Maize



Marigold



Sunflower



Adobe



Caramel



Khaki Gray



Limestone



Marble



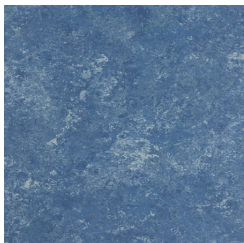
Soft Gray



Graphite



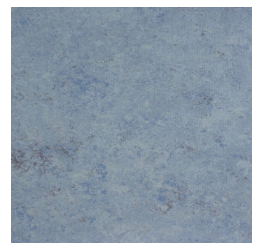
Spring Green



Blue Gray Marble



Denim



Dusty Blue



Teal



Moss



Cocoa



Black

Installation & Maintenance



3' x 1' x 7/16" click-lock Floating Floor Planks

Uniclic Tongue-Groove System

Sold in cartons of 18 Square feet

\$5.00/square foot

Lasting beauty can be achieved through purchasing a quality floor covering and providing proper on-going maintenance.

Unique Linoleum PROPERTIES

Linoleum contains organic pigments. Linoleum will change color over its lifetime as the linseed oil oxidizes. Where possible, use drapes or other systems to protect your floor from excessive light. Planks may appear to have an amber over-cast until they have been allowed to "breathe" or be touched by UV light. Then the ambering will dissipate and you'll see the color in all of its glory.

Linoleum floors expand and contract in response to fluctuations in temperature and humidity. By maintaining a close to constant temperature and relative humidity in the installation area, you will minimize the visible effects of the normal contraction and expansion of your floor.

In the kitchen, use a rug in front of the working areas, such as the stove and sink, to prevent local premature wear. Install proper protectors under "feet" of furniture. Furniture will require different types of protectors in order to achieve maximum weight distribution. Resilient pads such as those made of felt, flexible rubber, and hockey puck glides will work for most furniture.

Caster wheeled chairs should have wide casters. A protective mat should be used under office chairs. Maintain a minimum humidity of 50% in the room. IPeriodically check floor for signs of wear. Never apply tape or other adhesive products on surface.

MAINTENANCE

Sweep or vacuum floor frequently in order to avoid build up of abrasive particles. Routine cleaning will be done with damp mop. Spills should be wiped up immediately. Use walk-off mats at entrance doors and in front of kitchen sink. Avoid rubber backed or other non-ventilated mats or rugs.

Flooring may be sealed with Bioshield Floor Milk or other sealants safe for true linoleum flooring.

Installation & Maintenance



If the following instructions leave any unanswered questions or if additional information is required, please call Eco-Friendly Flooring, Inc. toll free 866-250-3273. You must read and understand these instructions completely before beginning installation. **Responsibility for the suitability of Eco-Friendly Flooring Floating Floors and accompanying products for each individual installation cannot be assumed by Eco-Friendly Flooring, Inc., since Eco-Friendly Flooring, Inc. has no control over the installer's proper application. Should an individual plank be doubtful as to appearance or dimension the installer should not use this piece.** Eco-Friendly Flooring will send replacement in a timely manner.

Linoleum is a natural product. Just like wood, cork parquet tile and plank will vary in shade or pattern definition. Also, while not as prevalent as with wood, linoleum is subject to the normal behavior of minor expansion during periods of high humidity and minor contraction during periods of low humidity (usually the heating season). With linoleum, expansion and contraction can be kept to unnoticeable levels by stabilizing the building through temperature and humidity control, allowing for proper acclimatization of the product prior to installation, and providing the recommended expansion space mentioned below.

Installation of floating floor is not recommended in bathrooms or in areas with high moisture concentration.

INSTALLATION ON CONCRETE SUBSTRATE: Eco-Friendly Flooring Floating Floors can be installed over concrete that is above grade, on grade or below grade. Concrete substrates are required to be sound, smooth and level. Tolerance of level must be within $\frac{1}{8}$ " in 10'. Check concrete slab for moisture with Calcium Chloride moisture test. Moisture content cannot be more than 3 pounds per 1,000 sq. ft. per 24 hours. Fill any low spots with Portland based leveler and scrape any high spots. Before installing Eco-Friendly Flooring Floating Floors, cover concrete floor with 6 mil polyethylene sheets, run up the wall 3", overlap seams 8", and tape the sheets together. Install plank over this moisture barrier.

INSTALLATION ON UNDERLAYMENT-GRADE PLYWOOD AND MAN-MADE BOARD SUBSTRATES: Subfloor must be clean and level. Fill any low spots with appropriate filler and sand any high spots. Tolerance of level must be within $\frac{1}{8}$ " in 10'. Subfloor must not exceed 14% moisture content (electrical resistance method). Check basements and under floor crawl spaces to be sure they are dry and well ventilated to avoid damage to planks caused by moisture. For buildings with crawl spaces, Eco-Friendly Flooring recommends use of 6 mil polyethylene sheeting as ground cover over the earth.

IN-FLOOR RADIANT HEATING SYSTEM: With radiant heat, heat source is directly beneath the flooring, so flooring may gain moisture or dry out faster than in a home with conventional heating system. For this installation, once slab has cured, turn heat on, regardless of season, and leave it on for at least 5-6 days before installation. Maximum surface temperature should never be more than 85 degrees Fahrenheit (30 degrees Celsius).

ECO-FRIENDLY FLOORING FLOATING FLOORS MUST BE ACCLIMATED: Store linoleum flooring out of the box at job site for a minimum of 72 hours. During storage and installation, maintain temperature and relative humidity to level consistent to the conditions that will prevail when building is occupied. Heating or air conditioning should be used for an appropriate length of time prior and during installation. With improper acclimation, the floor could noticeably expand or contract after installation.

NOTE: A run of Eco-Friendly Flooring Floating Floors exceeding 30 feet in any direction will require installation of an expansion joint. The same will be true when transitioning from one room to another.

Tools for Installation



Pull Bar



Mallet



Tapping Block



Tape Measure



Miter Saw



Circular Saw



Jamb Saw

Installation & Maintenance



GENERAL INSTALLATION GUIDELINES FOR CORK AND LINOLEUM

CLIC is a revolutionary system for installing floating floors without glue. This sophisticated and highly accurate milled shape ensures a very tight connection during installation and beyond. The cork wear layers are cut at a slight angle and press tightly against one another sealing the joint. As soon as the planks are installed they are under constant tension. Installing CLIC floating floor will require slightly more pressure than non-cork glueless systems.

Start installing the floor in one corner, preferably parallel to the longest wall and following the direction the light falls. It is equally possible to work from left to right or right to left.

Always insert the tongue into the groove, not the other way around.

STRING LINE: Choose the longest wall that will be parallel to the plank floor. Tap a nail part way into the old floor ½" from the wall at each end of the room. String a line between the nails ¾" above floor level. Use this string as a guide-line for the first row of planks. The ½" space from the wall allows room for expansion. Shuffle Eco-Friendly Flooring Floating Floors planks for best visual mix. Mix planks from various cartons to maintain natural color and pattern variation.

FIRST ROW: Facing the guide-line, place the first plank at the left-hand end, ***tongue side*** facing wall, starting ½" off the wall. It is necessary to remove the tongue from all planks lining the starting wall. Use ½" spacers at the end and along the wall (2 to a plank) while keeping the planks aligned with the string. Spacers keep planks from shifting when subsequent rows are added. Using a tapping block and a hammer, place block FLAT and against the fiberboard. Tap on block gently until the ends of the two planks are firmly joined, with the joint completely closed up. Continue this process until you reach the end wall. Cut the last plank to fit allowing for a ½" perimeter expansion space on all sides. **IMPORTANT! You should not attempt to knock the CLIC joint into place with one hit. Once the two planks have "clicked" together, DO NOT tap them again as this can crush the cork and result in peaking.**

NEXT ROWS: If the cut-off piece from the previous row is more than 10" long it can be used to start the next row as long as end-joints between adjacent rows are always staggered by at least 10". Firmly holding row 1 in place, (a weight such as a full pack of planks may be helpful).

Position the long side of the plank to be installed at an angle of 20-30° to the plank already installed. Move the plank to be fitted slightly up and down at the same time as exerting forward pressure. Using the tapping block on the long edge can help to achieve the proper locking of planks.

With your tapping block, use a number of smaller taps on the short edge, until the planks click together completely.

In some cases, such as under a door frame, the planks cannot be rotated into one another. In these situations, the planks can be fitted horizontally. For the long edge, you should tap them together gradually: begin tapping lightly at the corner of a plank until the join is made, then repeat the process every 12" until the entire long edge of the plank has clicked in with the other. In order to cut around pipes, take a drill bit with a diameter similar to the diameter of the pipe + ¼" for expansion.

LAST ROWS: Usually the last row will require all planks be cut lengthwise. Measure each plank at several places along the length to ensure a proper fit. Remember to allow a ½" expansion space along the wall side. Use floor pull bar and mallet to click the long side of planks. The short edge can be joined using the tapping block.

FINISH: One of the major benefits of using the Uniclic system is that after installation you can immediately walk on the floor. Remove all spacer blocks. Fix the skirting board over the extended polyethylene sheeting. Never attach skirting board to the floor itself, but allow space for the floor to expand and contract beneath the skirting board. In order to fill in the expansion gap around pipes and any other areas not covered by trim, use a flexible caulk.

